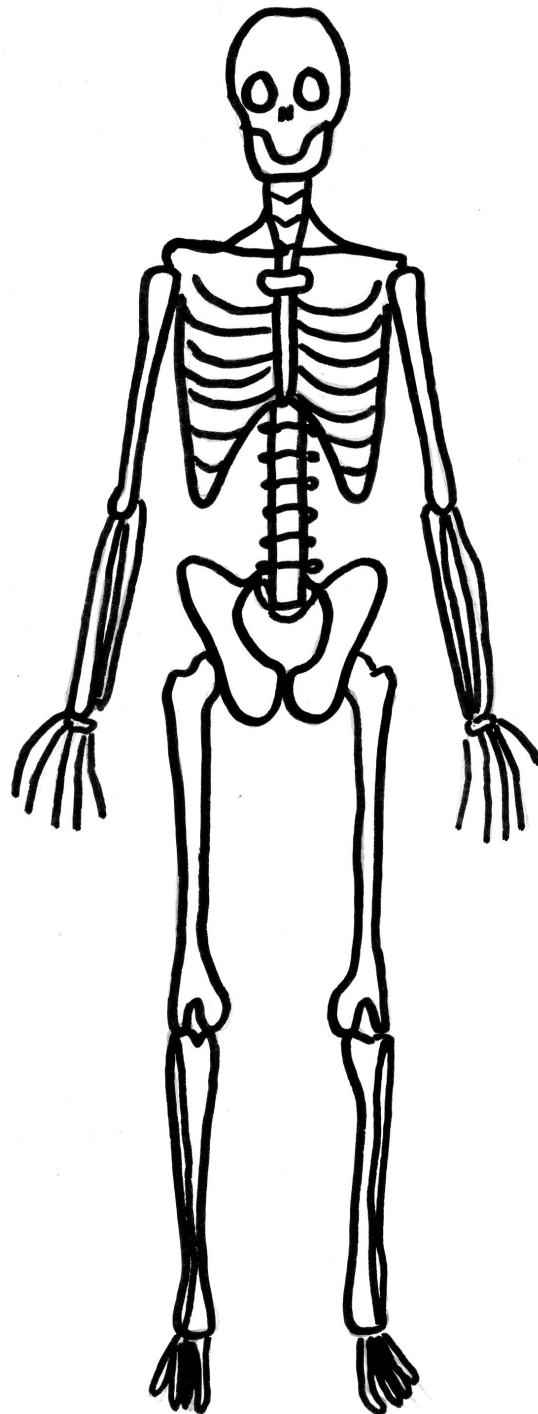
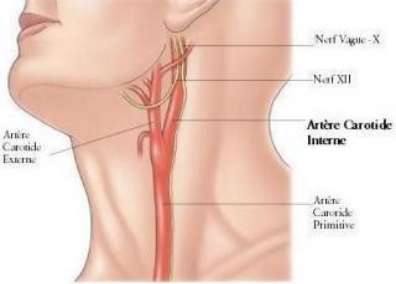


ABECEDAIRE DU CORPS HUMAIN





A

ARTERE



B

BRAS



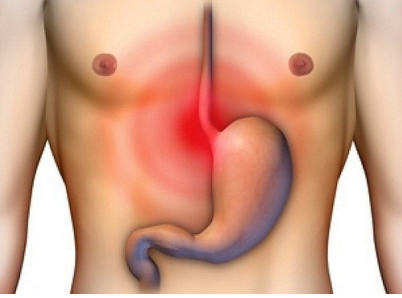
C

COLONNE VERTEBRALE



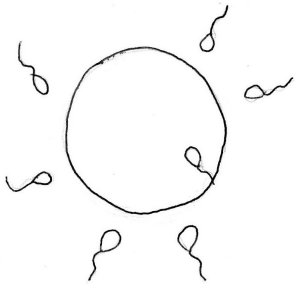
D

DENT



E

ESTOMAC



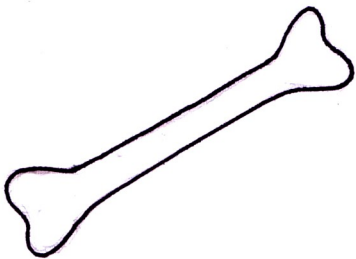
F

FECONDATION



G

GROSSESSE



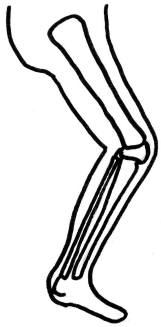
H

HUMERUS



INFIRMIERE

I



JAMBE

J

K



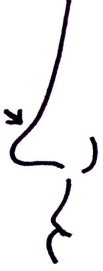
LEVRES

L



M

MAIN



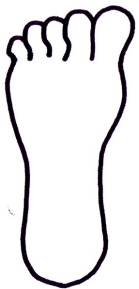
N

NEZ



O

OREILLE



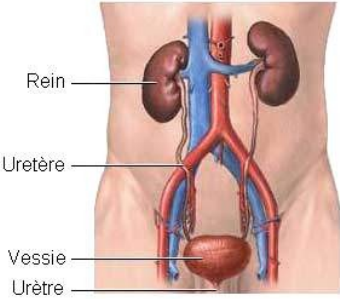
P

PIED



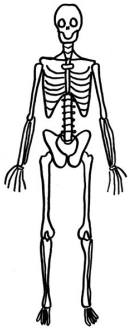
Q

QUADRICEPS



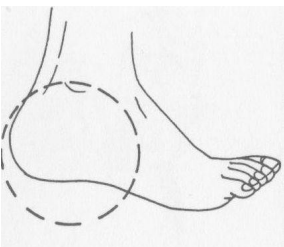
R

REINS



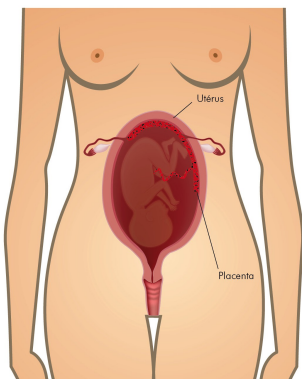
S

SQUELETTE



T

TALON



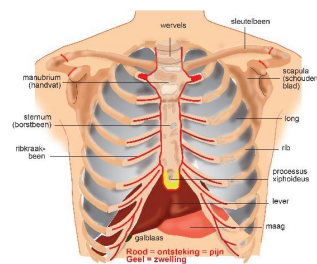
UTERUS

U



VISAGE

V



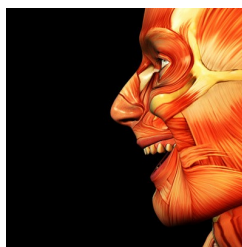
XIPHOIDE

W



YEUX

Y



Z

ZYGOMATIQUES